

Condensation hood AK

Kitchen hood for equipment that gives off steam and heat, such as boiling pots and dishwashers.

- › Factory-assembled hood with exhaust air
- › Efficient and removable condensation separator
- › Sloping inner ceiling to prevent condensation from dripping
- › Sides in stainless steel sheet metal
- › LED lighting with DALI control



Function

Steam and excess heat are sucked up into the hood, where the condensed water is separated. The dehumidified exhaust air is discharged via the exhaust air duct. The sloping ceiling prevents condensation from dripping from the hood.

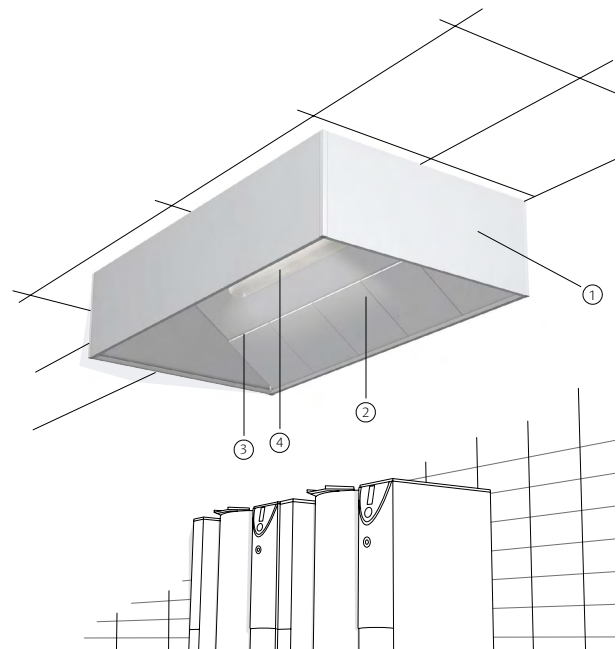
Design

The hood is delivered factory-assembled with four sides.

1. Sides in brushed stainless steel sheet metal
2. Condensation separator in stainless steel sheet metal
3. Pressure tap exhaust air
4. LED lighting, protection class IP 65

External lighting

The external lighting fixture is approved to protection class IP 65, which means that it is dust-tight and can be exposed to water. Supplied with LED lighting with colour temperature 4000 K and DALI control.



The lighting fixture complies with IP 65, which means that it can be exposed to water

Example description text

Condensation hood AK, manufactured by Acticon, with sides in brushed stainless steel sheet metal.

Exhaust air and LED lighting with DALI control.

Exhaust air connections with damper and pressure tap.

Removable condensation separator. Cover from upper edge of hood to room ceiling.

Specifications

AK - $\frac{2600}{\text{Length in mm}}$ x $\frac{1200}{\text{Depth in mm}}$ x $\frac{550}{\text{Height in mm}}$ - 2 x $\frac{315}{\text{Exhaust air connections: number x diameter}}$ - $\frac{450}{\text{Exhaust air in l/s}}$

Dimensions

Height of hood H = 550 mm or 350 mm.

Depth B = maximum 1700 mm when the height of the hood is 550 mm and maximum 1300 mm when the height is 350 mm.

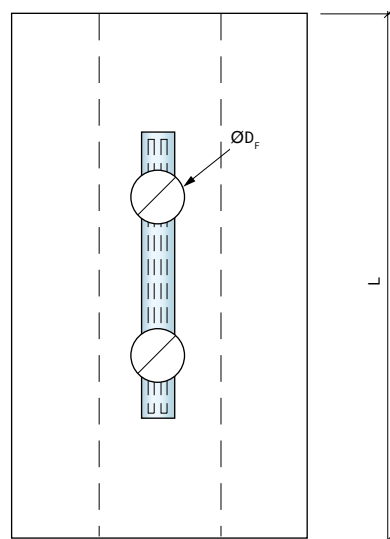
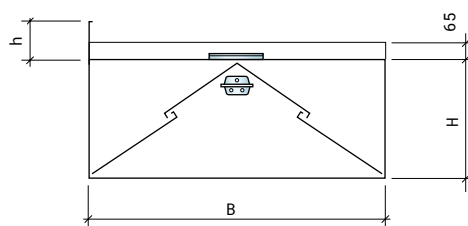
The length of the hood may be freely selected. When the length is greater than 3000 mm, the hood is delivered in two or more modules.

The connections for supply and exhaust air have spigot connections with rubber ring seals.

Exhaust air

The condensation separator is dimensioned for a pressure drop of 10-70 Pa. The table shows suitable diameters ØD_F for the exhaust air connection at different exhaust air flows.

Exhaust air l/s	Exhaust air connection ØD _F
0-100	200
100-150	250
150-250	315
250-420	400



- h = height of cover
- H = height of hood
- B = depth of hood
- L = length of hood
- ØD_F = diameter exhaust air connection

AIRsupply forbeholder sig ret til ændringer. Alle oplysninger, der står i denne brochure, kan ændres uden forudgående varsel.